



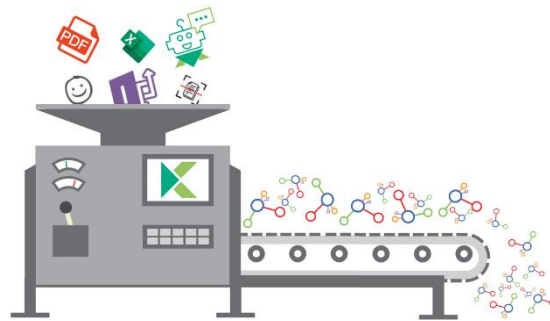
Kudzu – Form Migration

Seamless Transition to Lightning Forms:

Kudzu Form Migrator simplifies the process of migrating InfoPath forms to Lightning Forms. This ensures a smooth transition for organizations looking to modernize their forms and adapt to the changing landscape of SharePoint and data management. By doing so, businesses can leverage the advanced capabilities of Lightning Forms, which serves as a powerful, modern alternative to InfoPath, PDF, and Word forms.

Time and Cost Savings: Manual form migration can be a labor-intensive and costly process. With Kudzu, this task is automated, reducing the need for extensive manual labor and the associated costs. It enables organizations to accelerate their migration projects, leading to increased efficiency and cost-effectiveness.

Data Migration Capability: Kudzu Form Migrator offers the option to migrate data associated with InfoPath forms. This is particularly valuable for businesses looking to retain historical data or streamline data consolidation during the migration process.



The Kudzu Form Migrator presents several compelling advantages for businesses seeking to modernize their forms and migrate from InfoPath to Lightning Forms. Firstly, it streamlines the transition process, ensuring a smooth shift to Lightning Forms, which serves as a robust and contemporary alternative to traditional InfoPath, PDF, and Word forms. This enables organizations to take advantage of advanced features and capabilities, including responsive design, enhanced validation, and seamless SharePoint integration, ultimately improving user productivity and satisfaction.

A significant benefit of the Kudzu Form Migrator is its ability to save valuable time and resources. Manual form migration can be time-consuming and expensive. However, with Kudzu, the migration process is automated, reducing the need for labor-intensive manual work and cutting associated costs. This efficiency enables organizations to expedite migration projects, leading to increased productivity and cost-effectiveness.

Moreover, Kudzu Form Migrator offers the option to migrate data associated with InfoPath forms. This is particularly valuable for businesses aiming to retain historical data or streamline data consolidation during migration. By preserving data integrity and structure, organizations ensure a seamless transition while maintaining access to critical historical information.

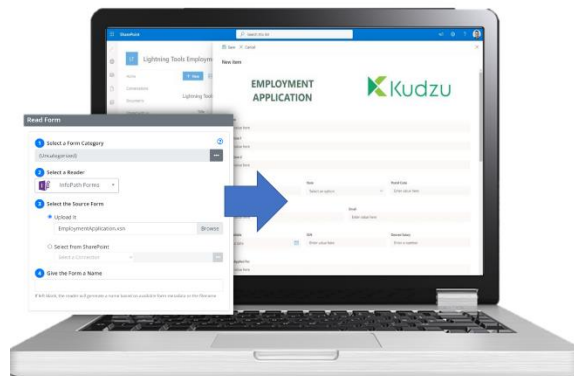
- The Kudzu Form Migrator is a versatile solution that simplifies the migration process for various types of forms including InfoPath, PDF, Word, Form Sketches and Mockups, and Images of forms.
- The Kudzu Migrator extracts form design and content from the source form, including form fields, layout, and data connections. Users are granted the flexibility to fine-tune the form's design and layout using an integral designer before the final migration to SharePoint Lists and Lightning Forms.
- This customization step ensures that the migrated form is not only functional but also optimized for its new destination.
- Furthermore, for organizations seeking continuity, data associated with InfoPath forms can be migrated alongside the form design, preserving historical records and information.

AI Form Creation - Kudzu also leverages the capabilities of artificial intelligence (AI) to streamline the process of form creation from simple prompts or sentences, such as "Create me a purchase order form." Through AI-powered natural language processing (NLP) and form recognition algorithms, Kudzu's intelligent engine interprets the user's request and extracts the essential components required for a purchase order form. It then proceeds to generate a fully functional form with the appropriate fields, layout, and design elements. By harnessing AI, Kudzu not only simplifies form creation but also ensures that the resulting forms are accurate, comprehensive, and in line with industry best practices, ultimately enhancing efficiency and productivity in the form design process.





Product Features and Benefits



About Lightning Tools:

Lightning Tools, founded in 2007 by Microsoft 365 Apps and Services MVP Brett Lonsdale, is a reputable Microsoft Partner known for its expertise in SharePoint and related technologies. With ISO 27001 and ISO 9001 certifications, Lightning Tools is committed to maintaining high standards of security and quality in its products and services, making it a trusted choice for organizations seeking effective solutions in the Microsoft ecosystem.

Customer Success:

Lightning Tools is dedicated to its customers' success by offering comprehensive support, regular product updates, and a commitment to understanding and addressing the unique needs of each client. They prioritize customer feedback, ensuring their solutions evolve to meet evolving challenges in the SharePoint and Microsoft 365 ecosystem, ultimately helping organizations maximize the value of their investments and achieve their business goals.

Kudzu Migration Features

Kudzu Form Migrator is a versatile tool designed to simplify the migration of various forms, including those created in InfoPath, PDF, and Word formats. It offers users the flexibility to transition their forms seamlessly to Lightning Forms. Users can initiate migration from any of these supported forms, ensuring that legacy forms can be brought into the future of data management.

One of the standout features of Kudzu Form Migrator is its integral designer, which allows users to reimagine and fine-tune their forms prior to the final migration. This powerful customization capability ensures that the migrated forms are not only functional but also optimized for their new destination.

The tool also offers data migration capabilities, enabling users to migrate not just the form design but also the associated data. This feature ensures that historical records and information collected through these forms are preserved, allowing for continuity in data management.

Finally, Kudzu Form Migrator generates a detailed report as part of the migration process. This report provides users with insights into the success of the migration and highlights any steps that may require manual intervention. This transparency allows organizations to ensure a smooth transition and address any issues promptly, minimizing disruptions during the migration process.

Kudzu Form Migrator offers seamless integration with both SharePoint Online and SharePoint On-Premises. The migration process begins with Kudzu extracting form designs and data from various sources, including InfoPath, PDF, and Word formats. Subsequently, this extracted form design is leveraged to automatically generate SharePoint lists, complete with columns that mirror the original form structure.

Following the generation of SharePoint lists, Kudzu Form Migrator utilizes the extracted form design to automatically create new form layouts using Lightning Forms. This process ensures that the migrated forms retain the original structure and data capture elements, maintaining data integrity throughout the migration. The generated form layouts serve as a foundation for the newly modernized forms, offering a consistent user experience within SharePoint.

The newly generated forms can be further customized and maintained using Lightning Forms, which provides an array of design and functionality options. Users have the ability to fine-tune form layouts, incorporate branding, and enhance user interactions within the Lightning Forms environment. Additionally, Lightning Forms empowers users to apply automation through command bar actions and the action builder, streamlining business processes and enhancing form functionality.

Find on our Website

[More Information](#)

[Pricing & Licensing](#)

[Submit Support Tickets](#)

[Book an Online Demonstration](#)

[Attend Kudzu Webinars](#)

www.lightningtools.com

